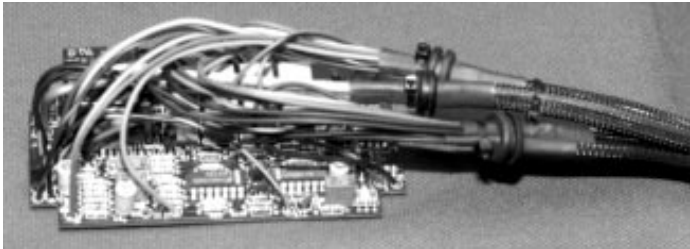


SELECT GASEOUS INTERCOOLING™ COMPONENTS

NOTE: YOU CANNOT HOOK DIRECTLY TO MANIFOLD AFTER THROTTLE BODY WITHOUT A SOLENOID BECAUSE IT WILL SUCK WATER IN DIRECTLY.

| P/N | DESCRIPTION | INSTALLATION APPROX. HRS. | RETAIL PRICE |
|---|--|------------------------------|-----------------|
| STANDARD GASEOUS INTERCOOLING™ SYSTEM: | | | |
| System includes high-pressure Gaseous Intercooling™ pump, adjustable manifold pressure switch, heavy duty power relay, complete wiring harness with Weatherpack connectors, complete documentation and wiring diagrams. To this system you must add a water reservoir. You can tap water from the windshield washer tank for your initial system. The pump draws 7 to 8 amperes at full load. This is a single speed system that can deliver up to 20 gph at 100 psig. System includes assorted hoses, a 15 GPH nozzle and choice of nozzle holder (weld or grommet) | | | |
| 30031S | | 4.0 | \$395.00 |
| STANDARD PLUS GASEOUS INTERCOOLING™ SYSTEM: | | | |
| System includes all of the same components as our Standard Gaseous Intercooling™ System. The Standard Plus™ System also includes a water pressure proof switch and lighted rocker switch that allows the system to be turned ON/OFF from inside the vehicle as well as giving a visual indication of when water is actually being injected. System includes assorted hoses, a 15 GPH nozzle and choice of nozzle holder (weld or grommet). To this system you must add a water reservoir. You can tap water from the windshield washer tank for your initial system or choose one of our optional reservoirs (see next page) | | | |
| 30031SP | | 6.0 | \$495.00 |
| DELUXE GASEOUS INTERCOOLING™ SYSTEM: | | | |
| System includes high-pressure Gaseous Intercooling™ pump, complete wiring harnesses and a smart "Black Box" Controller. The smart "Black Box" control module is housed in a plastic black box that measures 5-1/4" long x 2-5/8" wide x 1-5/8" deep. The module contains 2 adjustable setpoints that drive the Gaseous Intercooling™ pump from low speed to high speed. The setpoints are typically 3 and 7 psig for tuned port engines but any 2 setpoints can be had. The module features an engine interlock to prevent Gaseous Intercooling unless the engine is running. The module also features automatic power up with engine operation, trouble alarm, manual override control, 'READY' indicator, 'SUPERCHARGING' indicator, unique optional interlock with engine that prevents going into boost if water injection is not working or engine oil is too cold and fail safe circuitry which prevents pump operation without water. Complete instructions and wiring diagrams are included. To this system you must add a water reservoir. You can tap water from the windshield washer tank for your initial system or choose one of our optional reservoirs (see next page). This system takes from 16 to 24 hours to install. | | | |
| DELUXE GASEOUS INTERCOOLING™ SYSTEM BREAKDOWN w/INDIVIDUAL PRICING: | | | |
| A25018 | > GASEOUS INTERCOOLING™ PUMP | | \$295.00 |
| A25019 | > CONTROLLER | | \$260.00 |
| A25020M | > WIRING HARNESS, POWER | | \$85.00 |
| A25020C | > WIRING HARNESS, CONTROL | | \$75.00 |
| A25013 | > ROCKER SWITCH ASSEMBLY | | \$28.00 |
| B1330 | > LED INDICATOR FOR SUPERCHARGING | | \$5.00 |
| SPECIFY | > NOZZLE HOLDER (#1079 for Rubber Grommet or #1078 for Threaded Weld-O-Let) | | \$10.00 |
| SPECIFY | > NOZZLE HOLDER GROMMET -OR- WELD-O-LET | | TBD |
| 1075 | > NOZZLE, Assorted Starter System 5/10/15/20 gph, Stainless Steel | | \$20.00 |
| AS4S | > MAP SENSOR - 2 Bar | | \$55.00 |
| HOSE | > HOSE SYSTEM (Incl. Discharge Hose, Suction Hose & Intermediate Hose when applicable) | | \$20.00 |
| 30030 | > WHEN SOLD AS A COMPLETE SYSTEM | | \$795.00 |
| GEN-IV DELUXE GASEOUS INTERCOOLING™ SYSTEM: | | | |
| 30031 | Contains all of the same components as our Deluxe Gaseous Intercooling™ System as well as the solenoid/tank/proof switch assembly. When purchased as a complete system | | \$999.00 |
| A25017 | GEN-IV SOLENOID/TANK/PROOF SWITCH: When Sold Separately | | \$295.00 |
| 359115 | SOLENOID: When Sold Separately | | \$65.00 |
| 0269503 | ACCUMULATOR TANK: When Sold Separately | | \$28.00 |
| A1065 | MOUNTING BRACKET: For use with Rocker Switch | | \$7.95 |

(Complete description/comparison of all Carroll Gaseous Intercooling™ Systems may be found on Page 6)



**BLACK BOX
GEN-V CONTROLLER**

SELECT GASEOUS INTERCOOLING™ COMPONENTS

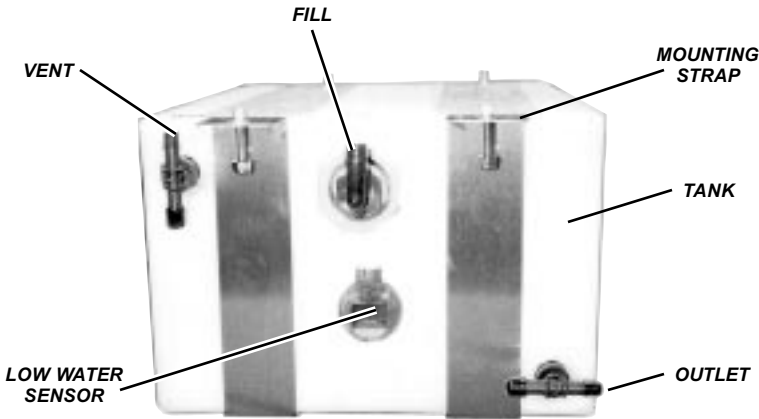
| P/N | DESCRIPTION | INSTALLATION APPROX. HRS. | RETAIL PRICE |
|---------|---|------------------------------|-----------------|
| | GEN-V DELUXE GASEOUS INTERCOOLING™ SYSTEM: | | |
| | System includes high-pressure Gaseous Intercooling™ pump, complete wiring harnesses and a smart "Black Box" Controller. The smart "Black Box" control module is housed in a plastic black box that measures 5-1/4" long x 2-5/8" wide x 1-5/8" deep. The module contains 3 adjustable setpoints that control 2 solenoids. All 3 setpoints are fully adjustable with multi-turn potentiometers located inside the controller. The module features an engine interlock to prevent Gaseous Intercooling™ unless the engine is running. The module also features automatic power up with engine operation, trouble alarm, manual override control, 'READY' indicator, 'SUPERCHARGING' indicator, unique optional interlock with engine that prevents going into boost if Gaseous Intercooling™ is not working or engine oil is too cold. Complete instructions and wiring diagrams are included. To this system you must add a water reservoir. You can tap water from the windshield washer tank for your initial system or choose one of our optional reservoirs. | | |
| | DELUXE GASEOUS INTERCOOLING™ SYSTEM BREAKDOWN w/INDIVIDUAL PRICING: | | |
| A25018 | > GASEOUS INTERCOOLING™ PUMP | | \$295.00 |
| A25019 | > CONTROLLER | | \$260.00 |
| A25020M | > WIRING HARNESS, POWER | | \$85.00 |
| A25020C | > WIRING HARNESS, CONTROL | | \$75.00 |
| A25013 | > ROCKER SWITCH ASSEMBLY | | \$28.00 |
| B1330 | > LED INDICATOR FOR SUPERCHARGING | | \$5.00 |
| SPECIFY | > NOZZLE HOLDER (#1079 for Rubber Grommet or #1078 for Threaded Weld-O-Let) | | \$10.00 |
| SPECIFY | > NOZZLE HOLDER GROMMET –OR– WELD-O-LET | | TBD |
| 1075 | > NOZZLE, Assorted Starter System 5/10/15/20 gph, Stainless Steel | | \$20.00 |
| AS4S | > MAP SENSOR – 2 Bar | | \$55.00 |
| HOSE | > HOSE SYSTEM (Incl. Discharge Hose, Suction Hose & Intermediate Hose when applicable) . | | \$20.00 |
| 30030 | > WHEN SOLD AS A COMPLETE SYSTEM | | \$795.00 |
| | GEN-V DELUXE GASEOUS INTERCOOLING™ SYSTEM: | | |
| CALL | Contains all of the same components as our Deluxe Gaseous Intercooling™ System as well as the solenoid/tank/proof switch assembly. When purchased as a complete system | | CALL |



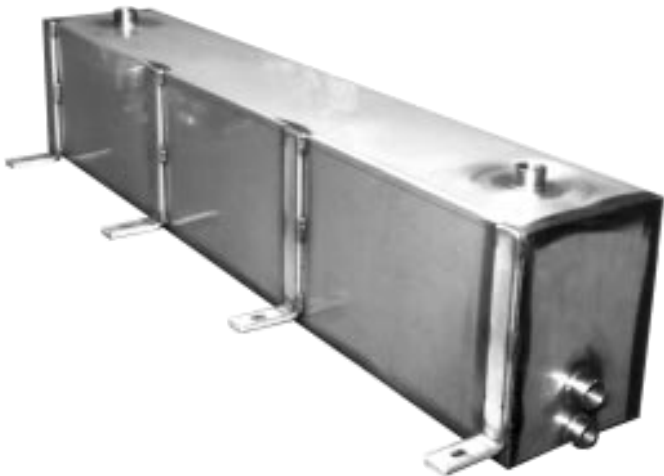
2 QT. RESERVOIR • 9-1663



BLADDER • B1091



PLASTIC RESERVOIR • 1363



STAINLESS STEEL CUSTOM RESERVOIR • 1571
TYPICAL APPLICATION SUV'S



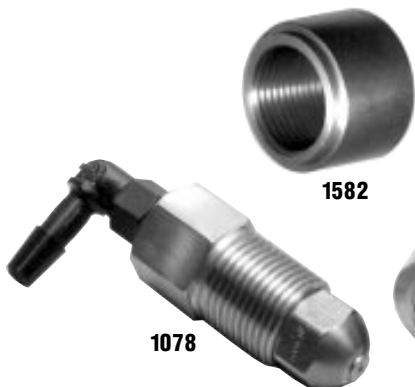
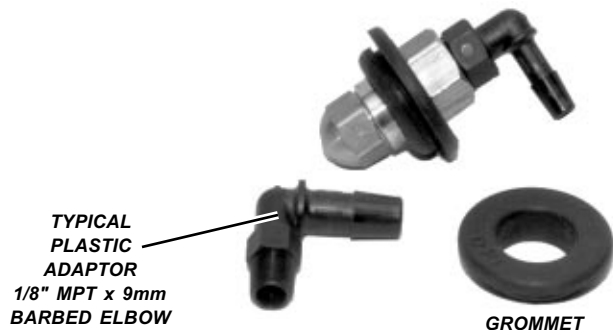
STAINLESS STEEL CUSTOM RESERVOIR • 1049/1070
TYPICAL APPLICATION CORVETTES



| | | | |
|--------------------------------------|--------------------------------------|--|--|
| 1/4" MPT x 1/4" BARB A4-4BN | 1/4" MPT x 3/8" BARB A4-6BN | 1/4" MPT x 3/8" BARB ELBOW L4-6BN | 1/4" MPT x 1/4" BARB ELBOW L4-4BN |
|--------------------------------------|--------------------------------------|--|--|

SELECT GASEOUS INTERCOOLING™ COMPONENTS

| P/N | DESCRIPTION | INSTALLATION APPROX. HRS | RETAIL PRICE |
|--------|---|-----------------------------|-----------------|
| | GASEOUS INTERCOOLING™ INSTALLATION SYSTEM: Includes discharge hose, plastic adaptors and clamps, nozzle holder, grommet, assorted stainless steel atomizing nozzles for your application and a windshield washer tank outlet adaptor. | | \$65.00 |
| 1073 | | | |
| | RESERVOIR: 2 qt. plastic with engraved cap, checkvalve, and wire basket for mounting..... | | \$20.00 |
| 9-1663 | | | |
| | RESERVOIR: Unique cloth bladder hangs from 4 brass grommets – overall dimensions 22" x 12". Holds approximately 2 gallons. | | \$225.00 |
| B1091 | | | |
| | STAINLESS STEEL REAR MOUNT WATER TANK: Mounts inside rear bumper in place of plastic crush material. Capacity 6 gallons for 1985 thru 1990 Corvettes and 7 gallons for 1991-94 Corvettes. May be coupled with front bladder to obtain total capacity of approximately 9 gallons of water. Includes sufficient hose to reach front of car. <i>NOTE: This is a Special Order Item and must be paid for in full upon ordering – NON-RETURNABLE.</i> | | |
| 1049 | > 1985 thru 1990 | 8.0 | \$795.00 |
| 1070 | > 1991/96 | 8.0 | \$695.00 |
| | RESERVOIR: Plastic chassis-mount or trunk-mount water tank. Capacity 6 gallons. Includes 2 stainless steel straps for mounting tank to chassis. <i>Please check dimensions – may not fit all vehicles.</i> Outside dimensions 17" x 8" x 12". | 3.0 | \$150.00 |
| 1363 | <i>NOTE: To this reservoir you must add our Installation & Remote Fill System.</i> | | |
| | RESERVOIR: Designed to be mounted on the passenger side of the vehicle between the frame rail and body sheet metal. This tank will fit all stock 5700 and 7400 vehicles. Stainless steel 7 gallon water tank – overall dimensions 36"L x 7"H x 6"W | | \$375.00 |
| 1571 | <i>NOTE: To this reservoir you must add our Installation & Remote Fill System.</i> | | |
| | INSTALLATION & REMOTE FILL SYSTEM: Includes all necessary parts to install a remote fill for the underchassis reservoir. System includes but is not limited to 12 feet of 1" fill hose, fill spout with hose cap and bracket, 6 feet of ½" rubber vent hose, 12 feet of 3/8" pump hose and assorted hose fittings. | | \$225.00 |
| 1572 | | | |
| | FITTINGS: Pipe thread available in 1/8", 1/4", 3/8", 1/2", 3/4" and 1" MPT. Th barbed hose end is available in straight or elbow from 1/4", 3/8" 1/2" and 1" barb. | | |
| L4-4BN | > 1/4" MPT x 1/4" Barb Elbow | | \$50 |
| A4-4BN | > 1/4" MPT x 1/4" Barb | | \$50 |
| L4-6BN | > 1/4" MPT x 3/8" Barb Elbow | | \$50 |
| A4-6BN | > 1/4" MPT x 3/8" Barb | | \$50 |

**NOZZLE • 1075****1078****1582****1077-1****THREADED NOZZLE HOLDER & WELD-O-LETS****WATER FILTER
(INLET STRAINER)
81-0240****TYPICAL HIGH-PRESSURE GASEOUS
INTERCOOLING™ PUMP • A25011
SHOWN WITH 40°-3/8" BARBED HOSE
INLET AND 90°-1/4" BARBED HOSE
OUTLET****TYPICAL WELD-O-LET NOZZLE
ADAPTOR ON AIR DISCHARGE TUBE
1077****TYPICAL
PLASTIC
ADAPTOR
1/8" MPT x 9mm
BARBED ELBOW****GROMMET****SERIES 495, GROMMET, NOZZLE HOLDER****BRASS NOZZLE HOLDERS • 1079
FOR USE WITH RUBBER GROMMETS****CHECKVALVE
A430 • A431****LOW WATER SENSOR • 30024****LOW WATER SENSOR • 30021****CHECKVALVE
A440**

SELECT GASEOUS INTERCOOLING™ COMPONENTS

| P/N | DESCRIPTION | INSTALLATION APPROX. HRS. | RETAIL PRICE |
|------------------------------------|--|------------------------------|--|
| | STANDARD GASEOUS INTERCOOLING™ HARNESS: For Standard Gaseous Intercooling™ only. Includes Power Relay, Main Power fuse, Safety Interlock fuse, and Packard Connectors. | | \$75.00 |
| 24029 | | | |
| | STANDARD PLUS GASEOUS INTERCOOLING™ HARNESS: For Standard Gaseous Intercooling™ only. Includes Power Relay, Main Power fuse, Safety Interlock fuse, Packard Connectors, Proof Switch and Lighted Rocker Switch. | | \$150.00 |
| 24030 | | | |
| | HIGH-PRESSURE GASEOUS INTERCOOLING™ PUMP: Pump is set up to produce 100 psig at up to 20 gph. Other pressures and volumes available upon request. The pump draws 7 to 10 amperes at full load. Inlet and outlet are 1/4" FPT. The pump comes complete with internal checkvalve and weatherproof electrical fittings. | | \$295.00 |
| A25011 | | | |
| | STAINLESS STEEL GASEOUS INTERCOOLING™ NOZZLES: Specify size from 5 to 28 gph in 1 gallon increments. | | \$5.95 |
| 1075 | | | |
| | BRASS NOZZLE HOLDERS: > 3/4-16 external thread for mating to 1077 series weld-o-lets > Smooth external surface for use with rubber grommet (<i>specify length 1", 1-3/8" or 2"</i>) | | \$24.00 \$10.00 |
| 1078 1079 | | | |
| | RUBBER GROMMET: > Grommet, Brass Nozzle Holder for 1/8" thick > Grommet, Brass Nozzle Holder for 1/4" thick | | \$3.00 \$3.00 |
| 495-002 495-016 | | | |
| | WELD-O-LET: > Aluminum bushing designed for welding to aluminum air discharge tubes > Brass bushing designed for silver solder or brazing > Stainless Steel bushing designed for MIG or TIG welding (1-1/2" Long) > Steel bushing designed for MIG or TIG welding | | \$15.00 \$17.00 \$42.00 \$12.00 |
| 1077-1 1077-2 1077-3 1582 | | | |
| | FILTER, WATER (INLET STRAINER): Replacement filter consisting of a stainless steel screen inside plastic holder. 5/16" x 5/16" barbed hose | | \$3.95 |
| 81-0240 | | | |
| | LOW WATER SENSOR: Solid state sensor for remote tank uses diffracted light to detect level. Dash indicator light comes on when tank is down to 1/3rd level. Sensor has built-in time delay and bulb check feature. | 1.0 | \$195.00 |
| 30024 | | | |
| | LOW WATER SENSOR: Lever-type float may be screwed into plastic tank and configured for N.O. or N.C. Usually we tie into the windshield washer low water sensor so that LOW WATER can mean either/or. .. | | \$25.00 |
| 30021 | | | |
| | ADAPTORS: Black nylon hose barb to pipe fittings available in many sizes. Most will cost you about 50¢ ea. | | CALL |
| | CHECKVALVE: > Black 3/8" barbed checkvalve for use on crankcase ventilation system. (<i>Viton diaphragm – NOT for use on our Gaseous Intercooling™ system – very low cracking pressure</i>) | | \$3.50 |
| A430 | | | |
| | > Black 3/8" barbed checkvalve for use on our Gaseous Intercooling™ system. (<i>Cs101 Fluorosilicone diaphragm – compatible with all alcohols including methanol</i>) | | \$3.50 |
| A431 | | | |
| | > Red 5/16" or 3/8" barbed checkvalve for general purpose use including, but not limited to, our Gaseous Intercooling™ systems. These valves may be disassembled and are available with other inserts and cracking pressures. (<i>Nylon diaphragm – compatible with all alcohols including methanol</i>) | | \$9.95 |
| A440 | | | |



**GASEOUS INTERCOOLING™ PROOF SWITCH
1531**



**MANIFOLD PRESSURE SWITCH
WITH BRASS BASE & BARBED
HOSE ADAPTOR
1331 • 1332**

ISOLATED CONTACTS



**HOBBS FIXED SETPOINT
PRESSURE SWITCHES
1535**



**PRESSURE SWITCH
1532**



**PRESSURE SWITCH
1533**



**BRASS ADAPTOR • 1333
1/8" FPT TO 1/8"
BARBED HOSE
(May be used in place
of brass base adaptor
on manifold pressure
switch)**



NON-ISOLATED CONTACTS



MPL PRESSURE SWITCHES



BARBED HOSE FITTINGS